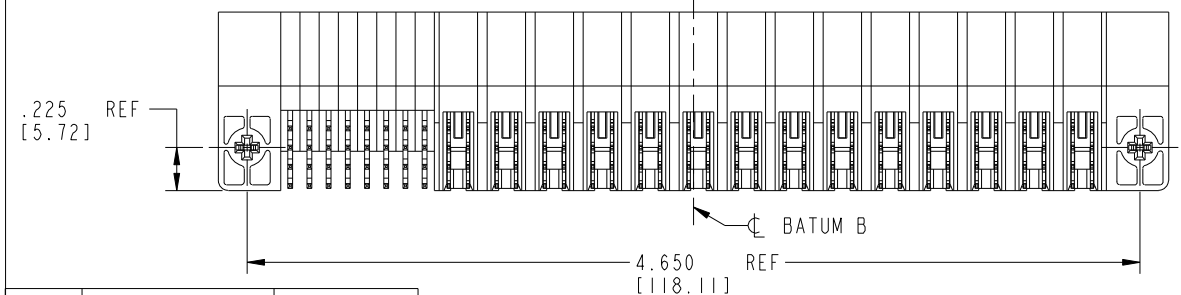
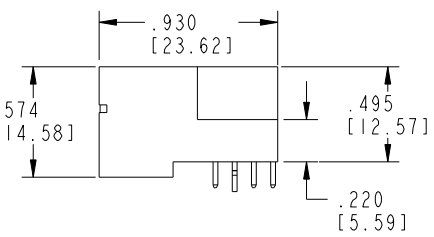
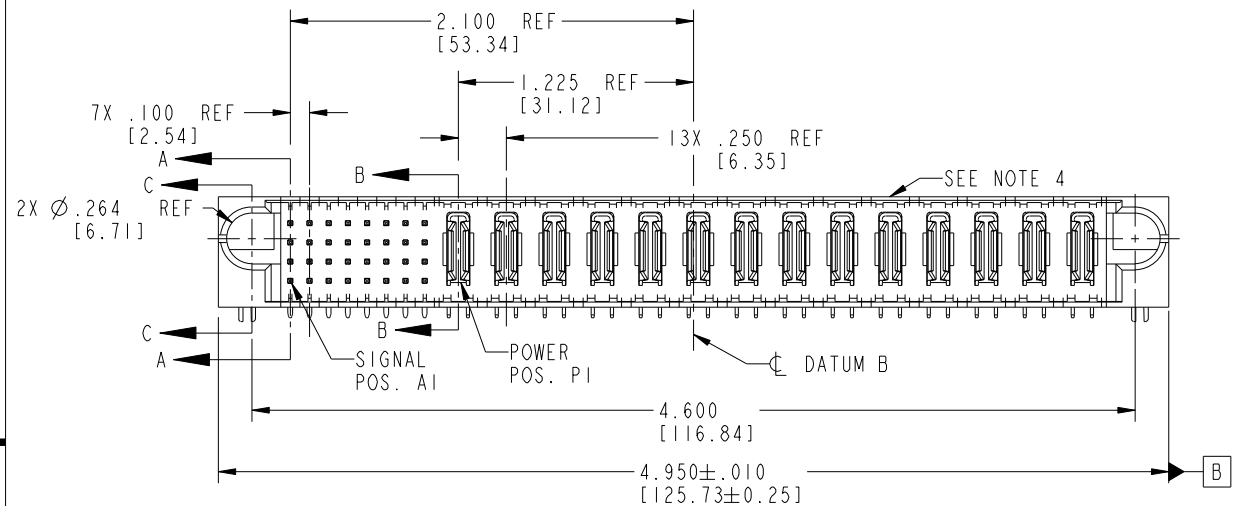
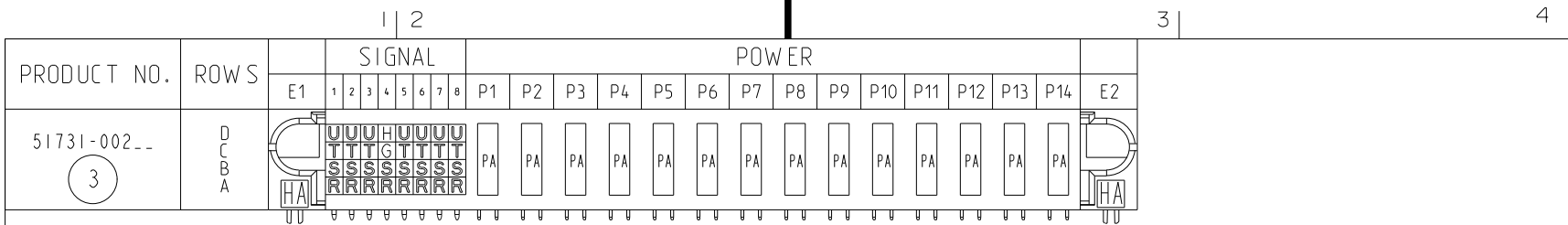


Tous droits strictement réservés. Reproduction ou communication a des tiers interdite sous quelque forme que ce soit sans autorisation écrite du propriétaire. Propriété de c FCI. Droits de reproduction FCI.

All rights strictly reserved. Reproduction or issue to third parties in any form whatever is not permitted without written authority from the proprietor. Property of FCI. Copyright FCI.



CODE	DIM "M" MATING LENGTH	CONTACT TYPE
G	.220 [5.59]	SIGNAL
H	.220 [5.59]	SIGNAL
R	.270 [6.86]	SIGNAL
S	.270 [6.86]	SIGNAL
T	.270 [6.86]	SIGNAL
U	.270 [6.86]	SIGNAL
PA	N/A [N/A]	POWER
HA	N/A [N/A]	HOLD-DOWN

mat'l code				SEE NOTE 2		tolerances unless otherwise specified		CUSTOMER	
ltr	ecn no.	dr	date	linear	angles	projection		COPY	
A	V02550	JWS	11-02-00	.XX±.01/0.X±0.3		projection		title	
B	V20495	JWS	03-26-02	.XXX±.005/0.XX±0.13		projection		32S + 14P	
C	V04-0915	TAB	09/15/04	.XXX±.0020/0.XXX±0.051	0°±2°	projection		RIGHT ANGLE SOLDER HEADER	
D	V04-1133	TAB	12/01/04			INCH/MM		product family	
E	DG05-0455	CS	11/12/05			INCH/MM		PwrBlade	
F	DG06-0367	JMG	09/07/06			scale		code	
						1:1		213	
								sheet	
								1 of 4	

sheet index		revision		F		F		F		F	
sheet	index	sheet	index	1	2	3	4	1	2	3	4



product family		PwrBlade		code	
size	dwg no	51731-002		213	
A				sheet	
				1 of 4	

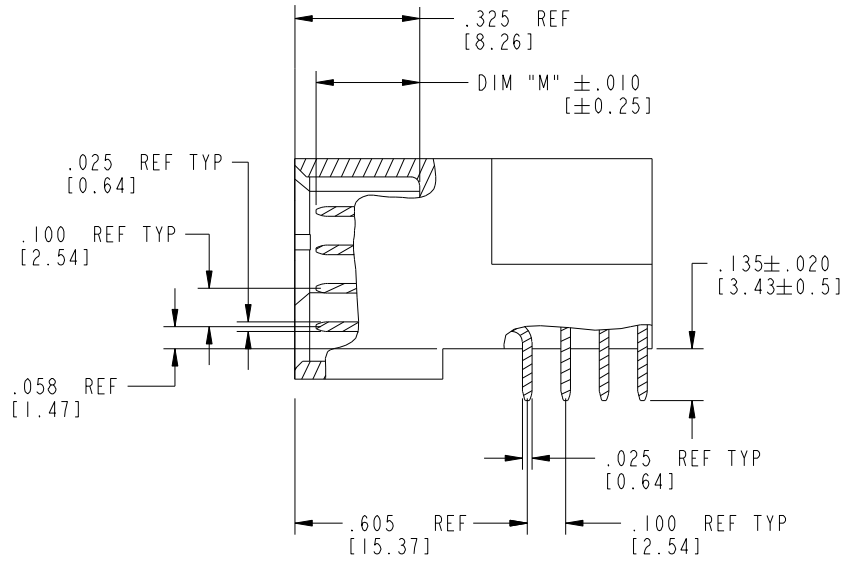
Tous droits strictement réservés. Reproduction ou communication a des tiers interdite sous quelque forme que ce soit sans autorisation écrite du propriétaire. Propriété de c FCI. Droits de reproduction FCI.



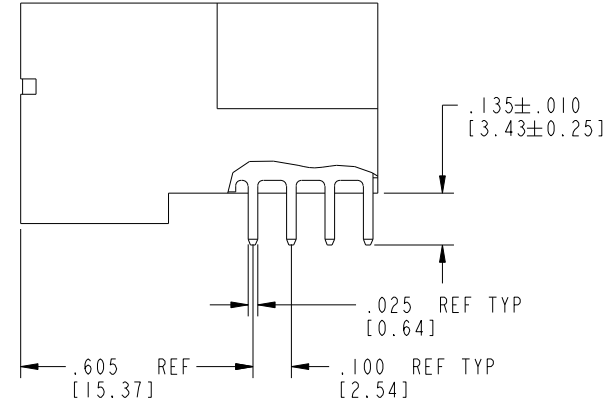
All rights strictly reserved. Reproduction or issue to third parties in any form whatever is not permitted without written authority from the proprietor. Property of FCI. Copyright FCI.

PRODUCT NUMBER

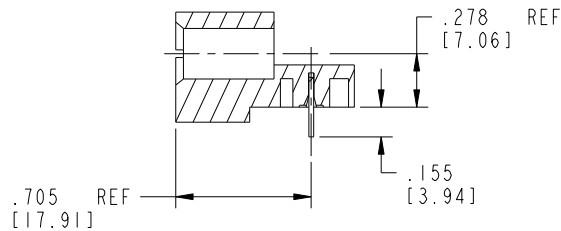
51731-002_ (3)



BROKEN-OUT SECTION A-A
SCALE 2:1



BROKEN-OUT SECTION B-B
SCALE 2:1



SECTION C-C

mat'l code		SEE NOTE 2		tolerances unless otherwise specified		CUSTOMER		 www.fciconnect.com	
lbr	ecn no.	dr	date	linear	.XX±.01/0.X±0.3	COPY		title	
F				projection	.XXY±.005/0.XX±0.13			32S + 14P	
				angles	.XXX±.0020/0.XXX±0.051			RIGHT ANGLE SOLDER HEADER	
				dr	J. SHAFFER 03-26-02	INCH/MM		product family	
				enrg	M. MOSTOLLER 03-26-02	scale		PwrBlade	
				chr	M. MOSTOLLER 03-26-02	1:1		code	
				appd	M. MOSTOLLER 03-26-02	A		213	
sheet index		revision sheet				A		sheet	
						51731-002		2 of 4	

Pro/E

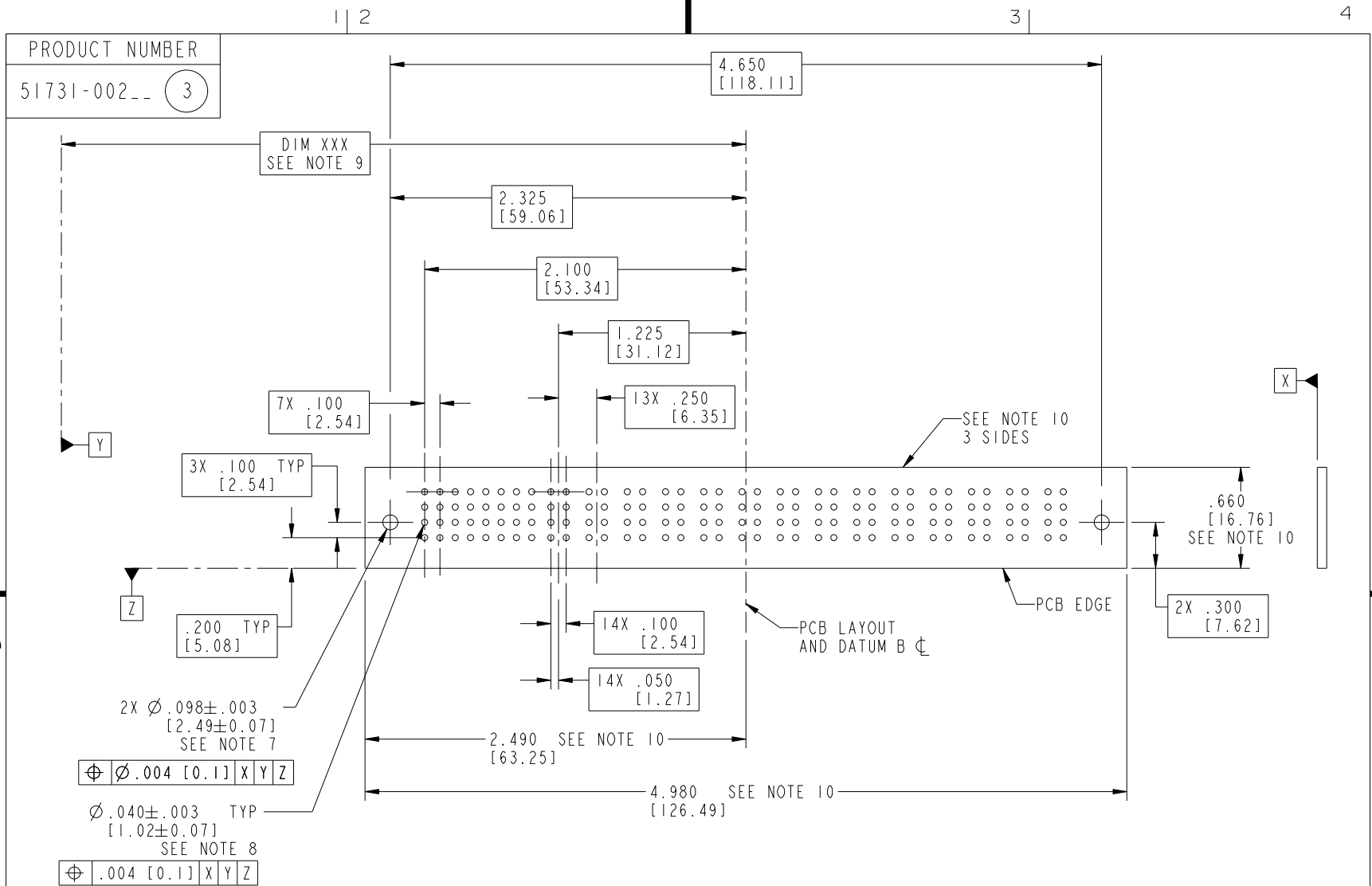
PDM: Rev:F

STAT: Released

Printed: Aug 17, 2007

Tous droits strictement réservés. Reproduction ou communication a des tiers interdite sous quelque forme que ce soit sans autorisation écrite du propriétaire. Propriété de c FCI. Droits de reproduction FCI.

All rights strictly reserved. Reproduction or issue to third parties in any form whatever is not permitted without written authority from the proprietor. Property of FCI. Copyright FCI.



RECOMMENDED PCB LAYOUT

mat'l code		SEE NOTE 2		tolerances unless otherwise specified		CUSTOMER		 www.fciconnect.com	
ltr	ecn no.	dr	date	linear	.XX±.01/0.X±0.3	COPY		title	
F					.XX±.005/0.XX±0.13	projection		32S + 14P	
				angles	.XXX±.0020/0.XXX±0.051			RIGHT ANGLE SOLDER HEADER	
				dr	0°±2°	INCH/MM		product family	
				engr	J. SHAFFER 03-26-02	scale		PwrBlade	
				chr	M. MOSTOLLER 03-26-02	1:1		code	
				appd	M. MOSTOLLER 03-26-02			213	
sheet index		revision sheet				A		51731-002	
								3 of 4	

cage code 22526

Pro/E

PDM: Rev:F

STATUS: Released

Printed: Aug 17, 2007

PRODUCT NUMBER

51731-002_ (3)

NOTES:

1. DIMENSIONS AND TOLERANCES ARE IN ACCORDANCE WITH ASME Y14.5M, 1994 UNLESS OTHERWISE SPECIFIED.

CONNECTOR NOTES:

- 2. HOUSING MATERIAL: UL 94 V-0 GLASS FILLED HIGH-TEMP THERMOPLASTIC
POWER CONTACT MATERIAL: COPPER ALLOY
SIGNAL PIN MATERIAL: COPPER ALLOY
- 3. 51731-002;51731-002LF;51731-002GLF PLATING SPEC. SEE PRINT:10064183
- 4. MANUFACTURER'S NAME, P/N, AND DATE CODE TO APPEAR ON THIS SURFACE.
- 5. PRODUCT SPECIFICATION GS-12-149.
APPLICATION SPECIFICATION BUS-20-067.

PCB NOTES:

- 6. ALL HOLE DIAMETERS ARE FINISHED HOLE SIZE.
- 7. MOUNTING HOLES, WHERE APPLICABLE, ARE UNPLATED.
- 8. $\varnothing .0453 \pm 0.0010$ [1.151 \pm 0.025] DRILLED HOLES PLATED WITH 0.0003 [0.008] MIN SnPb OR Sn OVER .001 [0.03] TO .003 [0.08] Cu PLATING TO ACHIEVE $\varnothing .040 \pm .003$ [1.02 \pm .07] HOLE.
- 9. "DIM XXX" TO BE DETERMINED BY THE CUSTOMER.
- 10. CONNECTOR KEEP-OUT ZONE.

mat'l code		SEE NOTE 2		tolerances unless otherwise specified		CUSTOMER		FCI		www.fciconnect.com	
ltr	ecn no.	dr	date	linear	.XX±.01/0.X±0.3	projection	COPY		title		
F					.XXX±.005/0.XX±0.13		32S + 14P		RIGHT ANGLE SOLDER HEADER		
				angles	.XXX±.0020/0.XXX±0.051		product family		PwrBlade		code
				dr	J. SHAFFER 03-26-02		size		dwg no		213
				enrg	M. MOSTOLLER 03-26-02		A		51731-002		sheet
				chr	M. MOSTOLLER 03-26-02		scale		1:1		4 of 4
				appd	M. MOSTOLLER 03-26-02						
sheet index	revision sheet										

Tous droits strictement réservés. Reproduction ou communication a des tiers interdite sous quelque forme que ce soit sans autorisation écrite du propriétaire. Propriété de c FCI. Droits de reproduction FCI.



All rights strictly reserved. Reproduction or issue to third parties in any form whatever is not permitted without written authority from the proprietor. Property of FCI. Copyright FCI.